



## Working safely near power lines

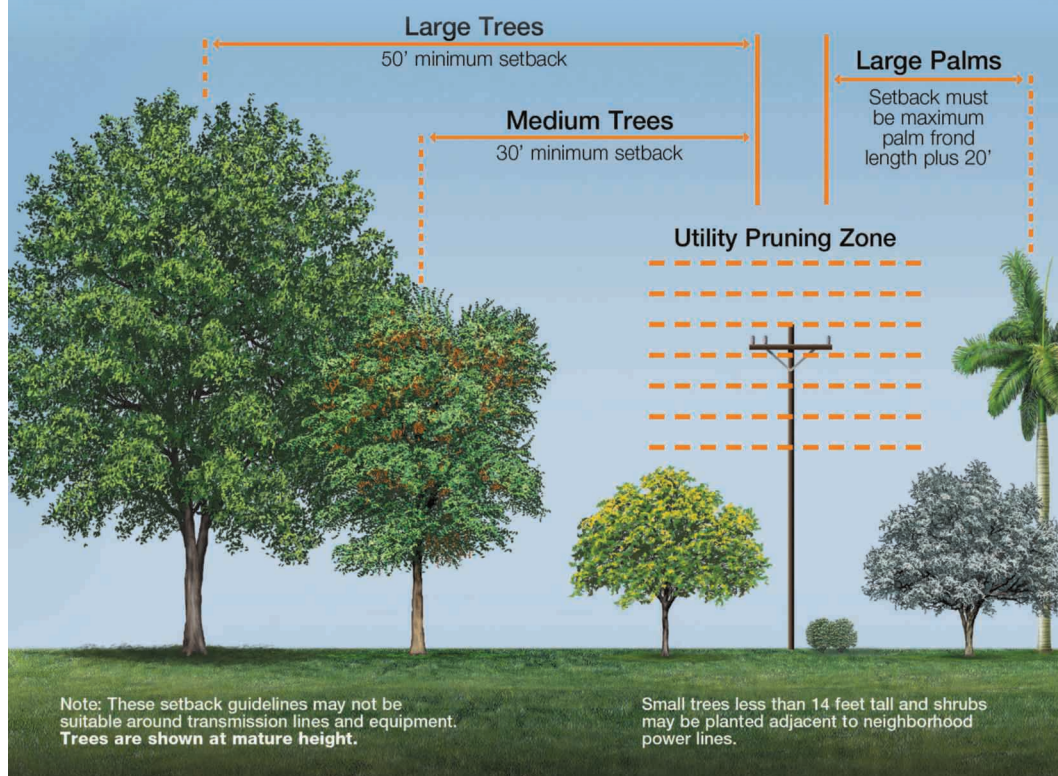
When working outside near power lines, it is crucial to stay safe. You can be seriously injured or worse if you or an object you are holding comes into contact with a power line.

Using our Right Tree, Right Place graphic as a guide, we urge you to plant trees according to the setback dimensions to keep power lines clear of interference. Additionally, always keep yourself and any object you are touching at least 10 feet away from neighborhood power lines. For taller, higher voltage transmission lines, the setback distance increases to at least 30 feet.

Other tips to remember:

- » **Never trim trees near power lines.** Only qualified tree trimming professionals should work around power lines.
- » **Assume all lines are energized.** Always assume that all overhead or underground wires or cables are energized and potentially dangerous. Stay away.
- » **Call before you dig.** Call 811 or visit [Call811.com](http://Call811.com) at least two business days before you begin work to avoid unintentionally hitting underground utility lines.

For more power line safety information, visit: » [FPL.com/safety](http://FPL.com/safety)



# Winter is coming: TOU hours changing

Time-of-use rate hours change in November. Save on your bill by changing timers and operation of equipment to off-peak winter hours: Monday through Friday, 10 a.m. to 6 p.m. and 10 p.m. to 6 a.m.

Maximize savings: >> [FPL.com/TOU](http://FPL.com/TOU)

# Rates and storm charge update

Two bill changes took effect in September that result in a net decrease in business customer bills; a routine storm charge adjustment and rate adjustments reflecting the transfer of the Martin-Riviera lateral to Florida Southeast Connection, LLC.

Learn more about your bill at: >> [FPL.com/rates](http://FPL.com/rates)

# Protect your cost of doing business

Electricity theft is big business with billions of dollars in electricity being stolen every year, making it the third most stolen product behind credit cards and automobiles. FPL investigated just under 16,000 meter tampering cases in 2017 alone.

We work hard to serve all of our customers in the most cost-efficient manner possible. When someone steals electricity, not only is it extremely dangerous, it also adds to our cost of doing business which drives up everyone's bills. Help stop thieves from driving up your energy bills.

**If you see something – report it anonymously, call 800-528-6621.**

For more information, visit: >> [FPL.com/meters](http://FPL.com/meters)



Roughly **\$6 billion** of electricity is **pirated** each year in the U.S.

**Electricity is the third most stolen product** in the U.S. behind **credit cards** and **autos**

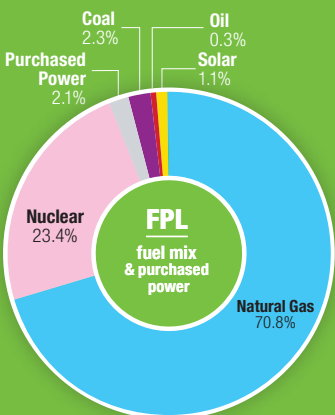


**Meter tampering** can cause **electric shock, fire, injury or death**

# Where does your energy come from?

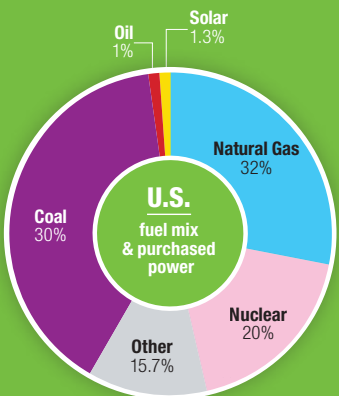
FPL's power comes from a variety of sources, including clean-burning natural gas and emissions-free nuclear and solar. We've significantly reduced our use of coal, while substantially increasing our investment in cost-effective solar.

See our latest fuel mix:



Sources of electricity generation for the 12 months between August 2017 – July 2018

See how we compare to the rest of the nation:



Major energy sources and percent share of total U.S. electricity generation as of Dec. 2017

Connect with us



[Facebook.com/FPLconnect](https://Facebook.com/FPLconnect)  
[Twitter.com/insideFPL](https://Twitter.com/insideFPL)

[FPLblog.com](http://FPLblog.com)  
[YouTube.com/FPL](https://YouTube.com/FPL)

FPL Energy Notes is published by  
Florida Power & Light Company  
P.O. Box 14000, Juno Beach, FL 33408

ENERGY NOTES | FOURTH QUARTER 2018



P100003665

CHANGING THE CURRENT.

